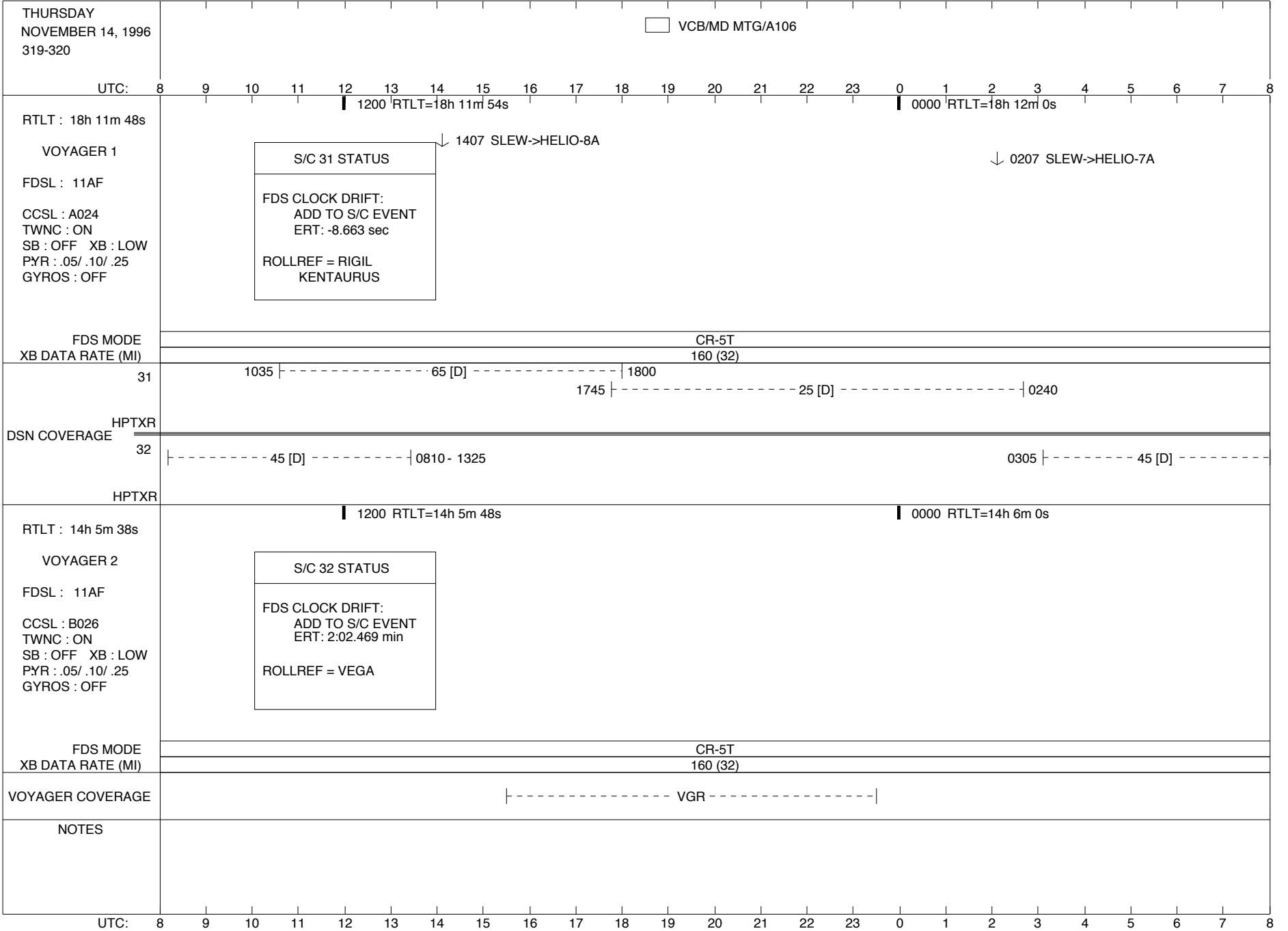


ISSUE DATE: 11/13/96 - 09:27

PST: 0 1 2 3 4 5 6 7 8 9 10 11 12 13 14 15 16 17 18 19 20 21 22 23 0



ISSUE DATE: 11/13/96 - 09:27

PST: 0 1 2 3 4 5 6 7 8 9 10 11 12 13 14 15 16 17 18 19 20 21 22 23 0

FRIDAY  
NOVEMBER 15, 1996  
320-321

☐ SCRAP/A106

UTC: 8 9 10 11 12 13 14 15 16 17 18 19 20 21 22 23 0 1 2 3 4 5 6 7 8

RTLT : 18h 12m 0s

█ 1200 RTLT=18h 12m 8s

█ 0000 RTLT=18h 12m 14s

VOYAGER 1

U/L 1400 | - | ----- TLC (SHORT-FORM) -----

FDSL : 11AF

↓ 0207 SLEW->HELIO-5A

CCSL : A024  
TWNC : ON  
SB : OFF XB : LOW  
PYR : .05/ .10/ .25  
GYROS : OFF

↓ 1407 SLEW->HELIO-6A

FDS MODE  
XB DATA RATE (MI)

CR-5T  
160 (32)

31 0900 | - 63 [D] - - | 1045

1140 | - - - - 61 - - - - | 1430

1505 | - - - - - - - - - - 25 [D] - - - - - - - - - - | 0235

DSN COVERAGE  
HPTXR

32 ----- 45 [D] ----- | 1320

45 [D] 0800

HPTXR

RTLT : 14h 6m 0s

█ 1200 RTLT=14h 6m 10s

█ 0000 RTLT=14h 6m 20s

VOYAGER 2

FDSL : 11AF

CCSL : B026  
TWNC : ON  
SB : OFF XB : LOW  
PYR : .05/ .10/ .25  
GYROS : OFF

FDS MODE  
XB DATA RATE (MI)

CR-5T  
160 (32)

VOYAGER COVERAGE

| - - - - - - - - - - VGR - - - - - - - - - - |

NOTES

UTC: 8 9 10 11 12 13 14 15 16 17 18 19 20 21 22 23 0 1 2 3 4 5 6 7 8

ISSUE DATE: 11/13/96 - 09:27

PST: 0 1 2 3 4 5 6 7 8 9 10 11 12 13 14 15 16 17 18 19 20 21 22 23 0

SATURDAY  
NOVEMBER 16, 1996  
321-322

UTC: 8 9 10 11 12 13 14 15 16 17 18 19 20 21 22 23 0 1 2 3 4 5 6 7 8

RTLTL : 18h 12m 14s

1200 RTLTL=18h 12m 22s

0000 RTLTL=18h 12m 28s

VOYAGER 1

--| TLC (SHORT-FORM)  
| D/L -| 0940

↓ 1407 SLEW->HELIO-4A

↓ 0207 SLEW->HELIO-3A

FDSL : 11AF

CCSL : A024  
TWNC : ON  
SB : OFF XB : LOW  
PYR : .05/ .10/ .25  
GYROS : OFF

FDS MODE  
XB DATA RATE (MI)

CR-5T  
160 (32)

31 |--- 63 [D] ---| 0830 - 1040

1030 |-----

65 [D] -----| 1800

1845 |-----

15 [D] -----| 0230

DSN COVERAGE  
HPTXR

32 |----- 45 [D] -----| 0800 - 1315

0255 |----- 45 [D] -----

HPTXR

RTLTL : 14h 6m 20s

1200 RTLTL=14h 6m 30s

0000 RTLTL=14h 6m 40s

VOYAGER 2

FDSL : 11AF

CCSL : B026  
TWNC : ON  
SB : OFF XB : LOW  
PYR : .05/ .10/ .25  
GYROS : OFF

FDS MODE  
XB DATA RATE (MI)

CR-5T  
160 (32)

VOYAGER COVERAGE

ON CALL

NOTES

UTC: 8 9 10 11 12 13 14 15 16 17 18 19 20 21 22 23 0 1 2 3 4 5 6 7 8

ISSUE DATE: 11/13/96 - 09:27

PST: 0 1 2 3 4 5 6 7 8 9 10 11 12 13 14 15 16 17 18 19 20 21 22 23 0

SUNDAY  
NOVEMBER 17, 1996  
322-323

UTC: 8 9 10 11 12 13 14 15 16 17 18 19 20 21 22 23 0 1 2 3 4 5 6 7 8

RTLT : 18h 12m 28s

1200 RTLT=18h 12m 34s

0000 RTLT=18h 12m 40s

VOYAGER 1

↓ 1407 SLEW->HELIO-2A

↓ 0207 SLEW->HELIO-1A

FDSL : 11AF

CCSL : A024  
TWNC : ON  
SB : OFF XB : LOW  
PYR : .05/ .10/ .25  
GYROS : OFF

FDS MODE  
XB DATA RATE (MI)

CR-5T

160 (32)

31

1025

65 [D]

1855

1840

25 [D]

0230

DSN COVERAGE  
HPTXR

32

45 [D]

1310

2205

15 [D]

0110

HPTXR

RTLT : 14h 6m 40s

1200 RTLT=14h 6m 52s

0000 RTLT=14h 7m 2s

VOYAGER 2

FDSL : 11AF

CCSL : B026  
TWNC : ON  
SB : OFF XB : LOW  
PYR : .05/ .10/ .25  
GYROS : OFF

FDS MODE  
XB DATA RATE (MI)

CR-5T

160 (32)

VOYAGER COVERAGE

ON CALL

NOTES

UTC: 8 9 10 11 12 13 14 15 16 17 18 19 20 21 22 23 0 1 2 3 4 5 6 7 8

ISSUE DATE: 11/13/96 - 09:27

PST: 0 1 2 3 4 5 6 7 8 9 10 11 12 13 14 15 16 17 18 19 20 21 22 23 0

MONDAY  
NOVEMBER 18, 1996  
323-324

UTC: 8 9 10 11 12 13 14 15 16 17 18 19 20 21 22 23 0 1 2 3 4 5 6 7 8

RTLT : 18h 12m 40s

1200 RTLT=18h 12m 48s

0000 RTLT=18h 12m 54s

VOYAGER 1

FDSL : 11AF

CCSL : A024  
TWNC : ON  
SB : OFF XB : LOW  
PYR : .05/ .10/ .25  
GYROS : OFF

FDS MODE  
XB DATA RATE (MI)

CR-5T  
160 (32)

31 |-----63 [D]-----| 0845 - 1135

1420 |-----65 [D]-----| 1820

1805 |-----25 [D]-----| 0225

DSN COVERAGE  
HPTXR

32 0850 |-----45 [D]-----| 1310

45 [D] 0745 |

HPTXR

RTLT : 14h 7m 2s

1200 RTLT=14h 7m 12s

0000 RTLT=14h 7m 22s

VOYAGER 2

FDSL : 11AF

CCSL : B026  
TWNC : ON  
SB : OFF XB : LOW  
PYR : .05/ .10/ .25  
GYROS : OFF

FDS MODE  
XB DATA RATE (MI)

CR-5T  
160 (32)

VOYAGER COVERAGE

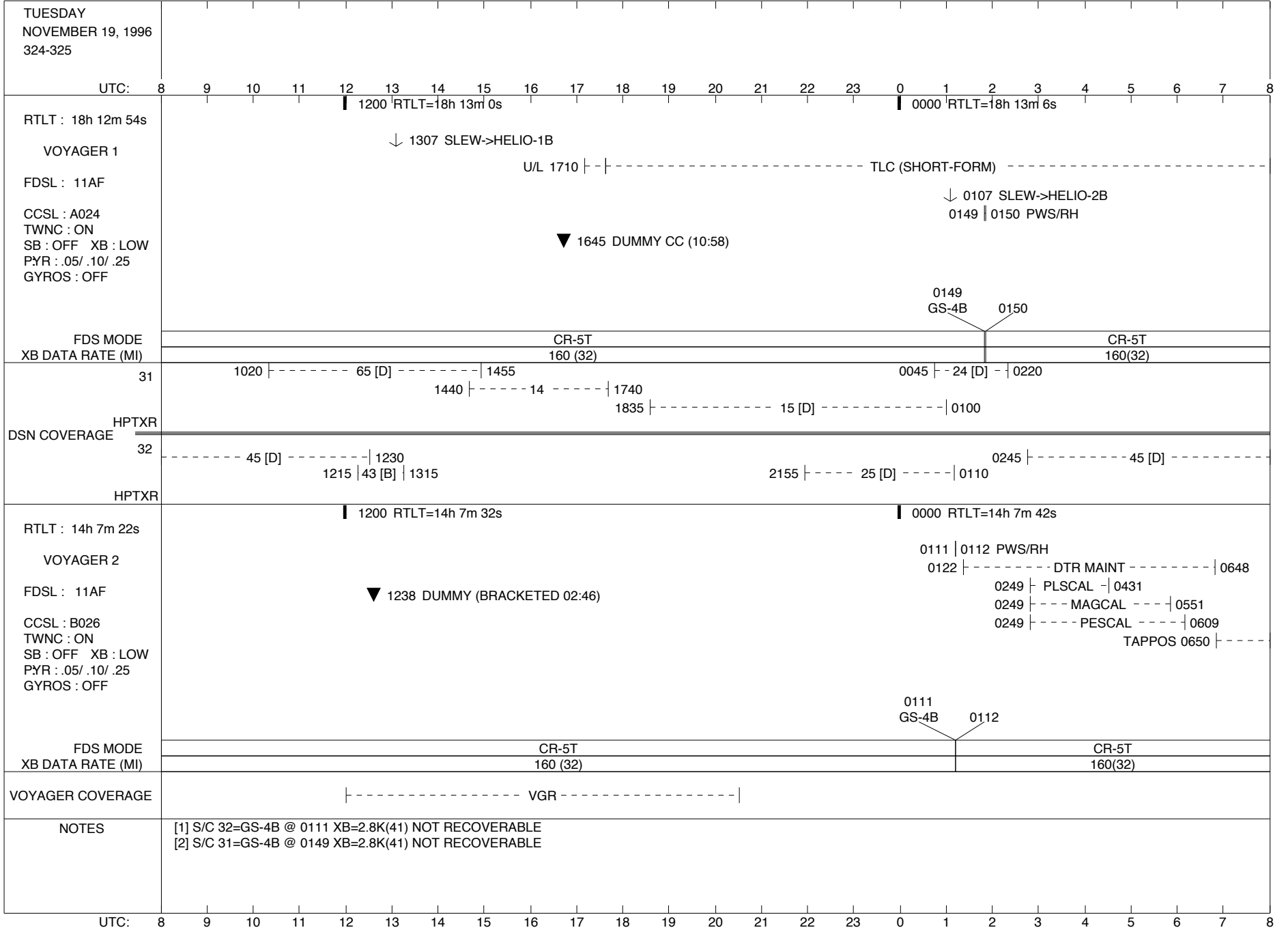
|----- VGR -----|

NOTES

UTC: 8 9 10 11 12 13 14 15 16 17 18 19 20 21 22 23 0 1 2 3 4 5 6 7 8

ISSUE DATE: 11/13/96 - 09:27

PST: 0 1 2 3 4 5 6 7 8 9 10 11 12 13 14 15 16 17 18 19 20 21 22 23 0



ISSUE DATE: 11/13/96 - 09:27

PST: 0 1 2 3 4 5 6 7 8 9 10 11 12 13 14 15 16 17 18 19 20 21 22 23 0

WEDNESDAY  
NOVEMBER 20, 1996  
325-326

UTC: 8 9 10 11 12 13 14 15 16 17 18 19 20 21 22 23 0 1 2 3 4 5 6 7 8

RTLT : 18h 13m 6s

1200 RTLT=18h 13m 12s

0000 RTLT=18h 13m 18s

VOYAGER 1

TLC (SHORT-FORM) - - | D/L - | 1251

↓ 0107 SLEW->HELIO-4B

FDSL : 11AF

↓ 1307 SLEW->HELIO-3B

CCSL : A024  
TWNC : ON  
SB : OFF XB : LOW  
PYR : .05/ .10/ .25  
GYROS : OFF

FDS MODE  
XB DATA RATE (MI)

CR-5T

160(32)

31

1035 |----- 61 [D] ----- | 1515

1500 |----- 25 [D] ----- | 0215

HPTXR

DSN COVERAGE

32

----- 45 [D] ----- | 1300

45 [D] 0740 |-----

HPTXR

RTLT : 14h 7m 42s

1200 RTLT=14h 7m 52s

0000 RTLT=14h 8m 2s

VOYAGER 2

TAPPOS | 0925

FDSL : 11AF

CCSL : B026  
TWNC : ON  
SB : OFF XB : LOW  
PYR : .05/ .10/ .25  
GYROS : OFF

FDS MODE  
XB DATA RATE (MI)

CR-5T

160(32)

VOYAGER COVERAGE

|----- VGR ----- |

NOTES

UTC: 8 9 10 11 12 13 14 15 16 17 18 19 20 21 22 23 0 1 2 3 4 5 6 7 8

ISSUE DATE: 11/13/96 - 09:27

PST: 0 1 2 3 4 5 6 7 8 9 10 11 12 13 14 15 16 17 18 19 20 21 22 23 0

THURSDAY  
NOVEMBER 21, 1996  
326-327

VCB/MD MTG/A106

UTC: 8 9 10 11 12 13 14 15 16 17 18 19 20 21 22 23 0 1 2 3 4 5 6 7 8

RTLT : 18h 13m 18s

1200 RTLT=18h 13m 24s

0000 RTLT=18h 13m 30s

VOYAGER 1

↓ 1307 SLEW->HELIO-5B

↓ 0107 SLEW->HELIO-6B

FDSL : 11AF

CCSL : A024  
TWNC : ON  
SB : OFF XB : LOW  
PYR : .05/ .10/ .25  
GYROS : OFF

FDS MODE  
XB DATA RATE (MI)

CR-5T

160(32)

31

1010 |----- 65 [D] -----| 1840

1825 |----- 25 [D] -----| 0215

DSN COVERAGE  
HPTXR

32

45 [D] -----| 1255

0235 |----- 45 [D] -----

HPTXR

2225 |---- 15 [D] ----| 0100

RTLT : 14h 8m 2s

1200 RTLT=14h 8m 12s

0000 RTLT=14h 8m 20s

VOYAGER 2

FDSL : 11AF

CCSL : B026  
TWNC : ON  
SB : OFF XB : LOW  
PYR : .05/ .10/ .25  
GYROS : OFF

FDS MODE  
XB DATA RATE (MI)

CR-5T

160(32)

VOYAGER COVERAGE

|----- VGR -----|

NOTES

UTC: 8 9 10 11 12 13 14 15 16 17 18 19 20 21 22 23 0 1 2 3 4 5 6 7 8



ISSUE DATE: 11/13/96 - 09:27

PST: 0 1 2 3 4 5 6 7 8 9 10 11 12 13 14 15 16 17 18 19 20 21 22 23 0

FRIDAY  
NOVEMBER 22, 1996  
327-328

☐ SCRAP/A106

UTC: 8 9 10 11 12 13 14 15 16 17 18 19 20 21 22 23 0 1 2 3 4 5 6 7 8

RTLT : 18h 13m 30s

█ 1200 RTLT=18h 13m 36s

█ 0000 RTLT=18h 13m 42s

VOYAGER 1

↓ 1307 SLEW->HELIO-7B

↓ 0107 SLEW->HELIO-8B

FDSL : 11AF

CCSL : A024  
TWNC : ON  
SB : OFF XB : LOW  
PYR : .05/ .10/ .25  
GYROS : OFF

FDS MODE  
XB DATA RATE (MI)

CR-5T  
160(32)

31

1030 |----- 61 [D] -----| 1505

1450 |----- 25 [D] -----| 0210

HPTXR

DSN COVERAGE

32

----- 45 [D] -----| 1250

45 [D] 0740 |-----

HPTXR

RTLT : 14h 8m 20s

█ 1200 RTLT=14h 8m 30s

█ 0000 RTLT=14h 8m 40s

VOYAGER 2

FDSL : 11AF

CCSL : B026  
TWNC : ON  
SB : OFF XB : LOW  
PYR : .05/ .10/ .25  
GYROS : OFF

FDS MODE  
XB DATA RATE (MI)

CR-5T  
160(32)

VOYAGER COVERAGE

|----- VGR -----|

NOTES

UTC: 8 9 10 11 12 13 14 15 16 17 18 19 20 21 22 23 0 1 2 3 4 5 6 7 8

ISSUE DATE: 11/13/96 - 09:27

PST: 0 1 2 3 4 5 6 7 8 9 10 11 12 13 14 15 16 17 18 19 20 21 22 23 0

SATURDAY  
NOVEMBER 23, 1996  
328-329

UTC: 8 9 10 11 12 13 14 15 16 17 18 19 20 21 22 23 0 1 2 3 4 5 6 7 8

RTLT : 18h 13m 42s

1200 RTLT=18h 13m 48s

0000 RTLT=18h 13m 54s

VOYAGER 1

↓ 1308 SLEW->HELIO-9B

↓ 0108 SLEW->HELIO-10B

FDSL : 11AF

CCSL : A024  
TWNC : ON  
SB : OFF XB : LOW  
PYR : .05/ .10/ .25  
GYROS : OFF

FDS MODE  
XB DATA RATE (MI)

CR-5T

160(32)

31

1205 |----- 65 [D] -----| 1830

1815 |----- 25 [D] -----| 0205

0645 | 63 [D] |

DSN COVERAGE  
HPTXR

32

45 [D] -----| 1250

2140 |----- 15 [D] -----| 0050

0225 |----- 45 [D] -----

HPTXR

RTLT : 14h 8m 40s

1200 RTLT=14h 8m 50s

0000 RTLT=14h 9m 0s

VOYAGER 2

FDSL : 11AF

CCSL : B026  
TWNC : ON  
SB : OFF XB : LOW  
PYR : .05/ .10/ .25  
GYROS : OFF

FDS MODE  
XB DATA RATE (MI)

CR-5T

160(32)

VOYAGER COVERAGE

----- ON CALL -----

NOTES

UTC: 8 9 10 11 12 13 14 15 16 17 18 19 20 21 22 23 0 1 2 3 4 5 6 7 8

ISSUE DATE: 11/13/96 - 09:27

PST: 0 1 2 3 4 5 6 7 8 9 10 11 12 13 14 15 16 17 18 19 20 21 22 23 0

SUNDAY  
NOVEMBER 24, 1996  
329-330

UTC: 8 9 10 11 12 13 14 15 16 17 18 19 20 21 22 23 0 1 2 3 4 5 6 7 8

RTLT : 18h 13m 54s

1200 RTLT=18h 14m 0s

0000 RTLT=18h 14m 6s

VOYAGER 1

↓ 1308 SLEW->MIDPNT1

↓ 1708 SLEW->MIDPNT2

FDSL : 11AF

CCSL : A024

TWNC : ON

SB : OFF XB : LOW

PYR : .05/ .10/ .25

GYROS : OFF

FDS MODE  
XB DATA RATE (MI)

CR-5T

160(32)

31

-- 63 [D] -- | 0945

1445 |----- 65 [D] -----| 1825

63 [D] 0745 |

1815 |----- 25 [D] -----| 0200

HPTXR

DSN COVERAGE

32

----- 45 [D] ----- | 1245

2135 |----- 15 [D] -----| 0045

45 [D] 0725 |

HPTXR

RTLT : 14h 9m 0s

1200 RTLT=14h 9m 10s

0000 RTLT=14h 9m 18s

VOYAGER 2

FDSL : 11AF

CCSL : B026

TWNC : ON

SB : OFF XB : LOW

PYR : .05/ .10/ .25

GYROS : OFF

FDS MODE  
XB DATA RATE (MI)

CR-5T

160(32)

VOYAGER COVERAGE

----- ON CALL -----

NOTES

UTC: 8 9 10 11 12 13 14 15 16 17 18 19 20 21 22 23 0 1 2 3 4 5 6 7 8

ISSUE DATE: 11/13/96 - 09:27

PST: 0 1 2 3 4 5 6 7 8 9 10 11 12 13 14 15 16 17 18 19 20 21 22 23 0

MONDAY  
NOVEMBER 25, 1996  
330-331

UTC: 8 9 10 11 12 13 14 15 16 17 18 19 20 21 22 23 0 1 2 3 4 5 6 7 8

RTLT : 18h 14m 6s

VOYAGER 1

FDSL : 11AF

CCSL : A024  
TWNC : ON  
SB : OFF XB : LOW  
PYR : .05/ .10/ .25  
GYROS : OFF

FDS MODE  
XB DATA RATE (MI)

CR-5T  
160(32)

1200 RTLT=18h 14m 12s

0000 RTLT=18h 14m 16s

↓ 1308 SLEW->HELIO-11B

↓ 0108 SLEW->HELIO-12B

▼ 0110 DUMMY (19:24)

31 --- 63 [D] --- | 1010

1000 |----- 65 [D] -----| 1430

1430 |----- 25 [D] -----| 2045

0045 | - 24 - | 0155

DSN COVERAGE  
HPTXR

32 ----- 45 [D] ----- | 1240

2130 |----- 25 [D] -----| 0045

0530 |----- 45 [D] -----

HPTXR

RTLT : 14h 9m 18s

VOYAGER 2

FDSL : 11AF

CCSL : B026  
TWNC : ON  
SB : OFF XB : LOW  
PYR : .05/ .10/ .25  
GYROS : OFF

FDS MODE  
XB DATA RATE (MI)

CR-5T  
160(32)

1200 RTLT=14h 9m 28s

0000 RTLT=14h 9m 38s

VOYAGER COVERAGE

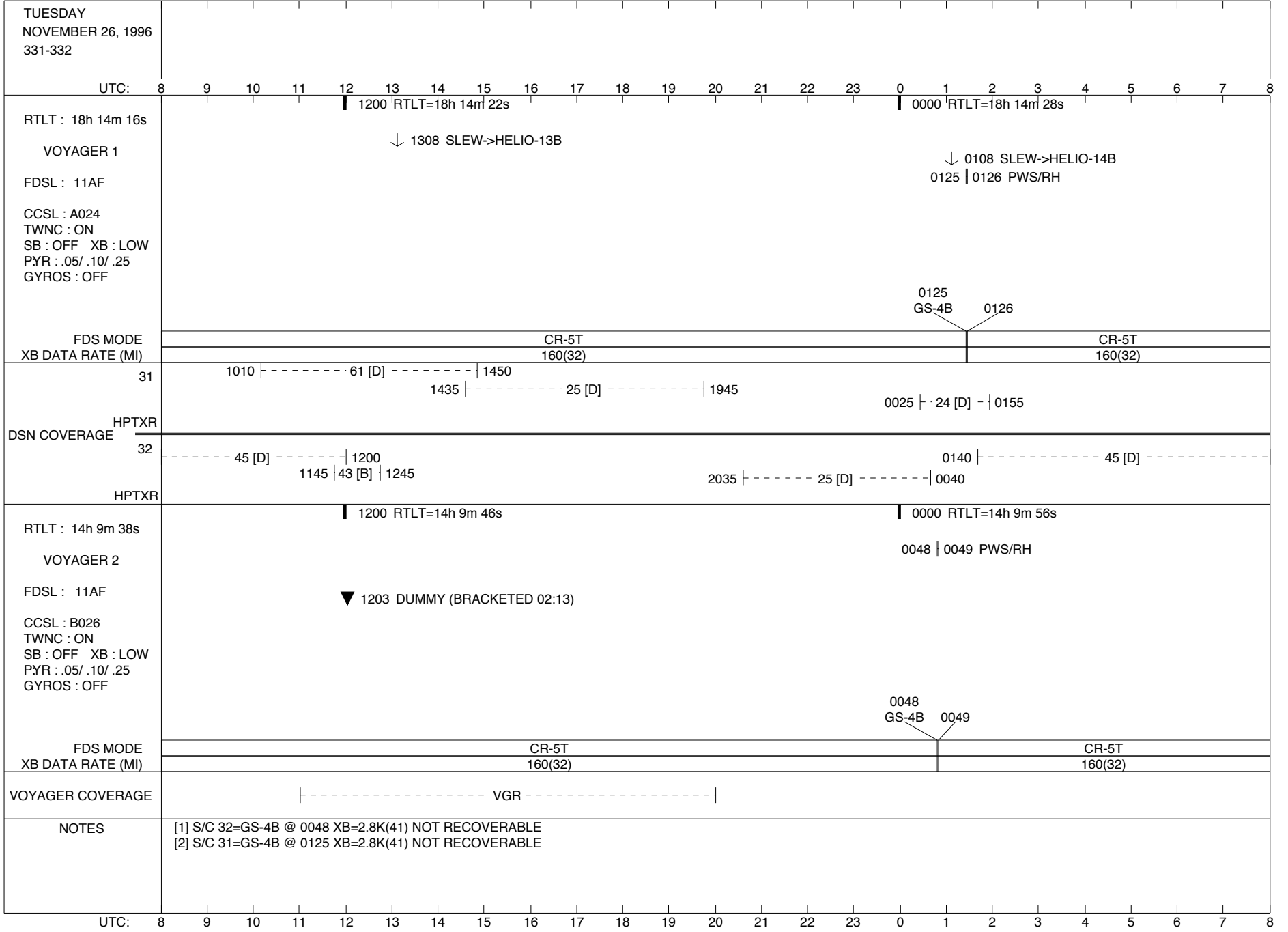
|----- VGR -----|

NOTES

UTC: 8 9 10 11 12 13 14 15 16 17 18 19 20 21 22 23 0 1 2 3 4 5 6 7 8

ISSUE DATE: 11/13/96 - 09:27

PST: 0 1 2 3 4 5 6 7 8 9 10 11 12 13 14 15 16 17 18 19 20 21 22 23 0



ISSUE DATE: 11/13/96 - 09:27

PST: 0 1 2 3 4 5 6 7 8 9 10 11 12 13 14 15 16 17 18 19 20 21 22 23 0

WEDNESDAY  
NOVEMBER 27, 1996  
332-333

UTC: 8 9 10 11 12 13 14 15 16 17 18 19 20 21 22 23 0 1 2 3 4 5 6 7 8

RTLT : 18h 14m 28s

VOYAGER 1

FDSL : 11AF

CCSL : A024  
TWNC : ON  
SB : OFF XB : LOW  
PYR : .05/ .10/ .25  
GYROS : OFF

FDS MODE  
XB DATA RATE (MI)

CR-5T  
160(32)

1200 RTLT=18h 14m 34s

0000 RTLT=18h 14m 38s

↓ 1308 SLEW->HELIO-15B

↓ 0108 SLEW->HELIO-16B

31

1130 |-----61 [D] -----| 1430

1420 |-----25 [D] -----| 1945

HPTXR  
DSN COVERAGE

32

--45 [D] -| 0935

0215 |-----45 [D] -----| 0655

HPTXR

RTLT : 14h 9m 56s

VOYAGER 2

FDSL : 11AF

CCSL : B026  
TWNC : ON  
SB : OFF XB : LOW  
PYR : .05/ .10/ .25  
GYROS : OFF

FDS MODE  
XB DATA RATE (MI)

CR-5T  
160(32)

1200 RTLT=14h 10m 6s

0000 RTLT=14h 10m 14s

VOYAGER COVERAGE

|----- VGR -----|

NOTES

UTC: 8 9 10 11 12 13 14 15 16 17 18 19 20 21 22 23 0 1 2 3 4 5 6 7 8

ISSUE DATE: 11/13/96 - 09:27

PST: 0 1 2 3 4 5 6 7 8 9 10 11 12 13 14 15 16 17 18 19 20 21 22 23 0

THURSDAY  
NOVEMBER 28, 1996  
333-334

VCB/MD MTG/A106

UTC: 8 9 10 11 12 13 14 15 16 17 18 19 20 21 22 23 0 1 2 3 4 5 6 7 8

RTLTL : 18h 14m 38s

1200 RTLTL=18h 14m 44s

0000 RTLTL=18h 14m 48s

VOYAGER 1

↓ 1308 SLEW->HELIO-17B

↓ 0108 SLEW->HELIO-18B

FDSL : 11AF

CCSL : A024  
TWNC : ON  
SB : OFF XB : LOW  
PYR : .05/ .10/ .25  
GYROS : OFF

FDS MODE  
XB DATA RATE (MI)

CR-5T

160(32)

31

0945 |----- 65 [D] -----| 1800

1745 |----- 25 [D] -----| 0145

DSN COVERAGE  
HPTXR

32

0210 |----- 45 [D] -----|

HPTXR

RTLTL : 14h 10m 14s

1200 RTLTL=14h 10m 24s

0000 RTLTL=14h 10m 32s

SLEW->HELIO-1A 0708 ↓

VOYAGER 2

FDSL : 11AF

CCSL : B026  
TWNC : ON  
SB : OFF XB : LOW  
PYR : .05/ .10/ .25  
GYROS : OFF

FDS MODE  
XB DATA RATE (MI)

CR-5T

160(32)

VOYAGER COVERAGE

----- ON CALL -----

NOTES

**THANKSGIVING DAY**

UTC: 8 9 10 11 12 13 14 15 16 17 18 19 20 21 22 23 0 1 2 3 4 5 6 7 8

ISSUE DATE: 11/13/96 - 09:27

PST: 0 1 2 3 4 5 6 7 8 9 10 11 12 13 14 15 16 17 18 19 20 21 22 23 0

FRIDAY  
NOVEMBER 29, 1996  
334-335

☐ SCRAP/A106

UTC: 8 9 10 11 12 13 14 15 16 17 18 19 20 21 22 23 0 1 2 3 4 5 6 7 8

RTLT : 18h 14m 48s

1200 RTLT=18h 14m 54s

0000 RTLT=18h 15m 0s

VOYAGER 1

↓ 1308 SLEW->HELIO-19B

↓ 0108 SLEW->HELIO-20B

FDSL : 11AF

CCSL : A024  
TWNC : ON  
SB : OFF XB : LOW  
PYR : .05/ .10/ .25  
GYROS : OFF

FDS MODE  
XB DATA RATE (MI)

CR-5T  
160(32)

31

0945

-----65 [D]-----

1810

1755

-----15 [D]-----

0140

HPTXR

DSN COVERAGE

32

45 [D]

-----1225

2115

-----25 [D]-----

0030

0210

-----45 [D]-----

0645

HPTXR

RTLT : 14h 10m 32s

1200 RTLT=14h 10m 42s

0000 RTLT=14h 10m 50s

VOYAGER 2

↓ 1908 SLEW->HELIO-2A

SLEW->HELIO-3A 0709 ↓

FDSL : 11AF

CCSL : B026  
TWNC : ON  
SB : OFF XB : LOW  
PYR : .05/ .10/ .25  
GYROS : OFF

FDS MODE  
XB DATA RATE (MI)

CR-5T  
160(32)

VOYAGER COVERAGE

-----ON CALL-----

NOTES

**JPL HOLIDAY**

UTC: 8 9 10 11 12 13 14 15 16 17 18 19 20 21 22 23 0 1 2 3 4 5 6 7 8





ISSUE DATE: 11/13/96 - 09:27

PST: 0 1 2 3 4 5 6 7 8 9 10 11 12 13 14 15 16 17 18 19 20 21 22 23 0

SUNDAY  
DECEMBER 1, 1996  
336-337

UTC: 8 9 10 11 12 13 14 15 16 17 18 19 20 21 22 23 0 1 2 3 4 5 6 7 8

RTLT : 18h 15m 10s

1200 RTLT=18h 15m 14s

0000 RTLT=18h 15m 18s

VOYAGER 1

FDSL : 11AF

CCSL : A024  
TWNC : ON  
SB : OFF XB : LOW  
PYR : .05/ .10/ .25  
GYROS : OFF

FDS MODE  
XB DATA RATE (MI)

CR-5T

160(32)

31 -- 63 [D] -- | 0950

63 [D] 0800

0940 |-----

65 [D] -----

1745

1730 |-----

25 [D] -----

| 0135

DSN COVERAGE HPTXR

32

2110 |----- 15 [D] ----- | 0015

0605 |--- 45 [D] ---

HPTXR

RTLT : 14h 11m 8s

1200 RTLT=14h 11m 18s

0000 RTLT=14h 11m 26s

VOYAGER 2

↓ 1909 SLEW->HELIO-6A

SLEW->HELIO-7A 0709 ↓

FDSL : 11AF

CCSL : B026  
TWNC : ON  
SB : OFF XB : LOW  
PYR : .05/ .10/ .25  
GYROS : OFF

FDS MODE  
XB DATA RATE (MI)

CR-5T

160(32)

VOYAGER COVERAGE

----- ON CALL -----

NOTES

UTC: 8 9 10 11 12 13 14 15 16 17 18 19 20 21 22 23 0 1 2 3 4 5 6 7 8