

ISSUE DATE: 03/14/02 - 11:13

PST: 0 1 2 3 4 5 6 7 8 9 10 11 12 13 14 15 16 17 18 19 20 21 22 23 0

THURSDAY  
MARCH 14, 2002  
073-074

UTC: 8 9 10 11 12 13 14 15 16 17 18 19 20 21 22 23 0 1 2 3 4 5 6 7 8

RTLTL : 23h 16m 2s

1200 RTLTL=23h 16m 0s

0000 RTLTL=23h 15m 58s

VOYAGER 1

S/C 31 STATUS

FDSL : 11AF

FDS CLOCK DRIFT:  
ADD TO S/C EVENT  
ERT: -23.743 sec

CCSL : A042  
TWNC : ON  
SB : OFF XB : HI  
PYR : .10 /.10/.25  
GYROS : AB ON

ROLLREF = RIGIL  
KENTAURUS

FDS MODE  
XB DATA RATE (MI)

CR-5T  
160 (32)

31 0855 |----- 25 [D] -----| 1725

0120 |--- 65 [D] ---| 0350

DSN COVERAGE  
HPTXR

32 1835 |----- 43 [D] -----| 0530

HPTXR

RTLTL : 18h 33m 26s

1200 RTLTL=18h 33m 22s

0000 RTLTL=18h 33m 20s

VOYAGER 2

S/C 32 STATUS

FDSL : 11AF

FDS CLOCK DRIFT:  
ADD TO S/C EVENT  
ERT: -1:43.129 sec

CCSL : B115  
TWNC : ON  
SB : OFF XB : HI  
PYR : .05 /05 /05  
GYROS : BC ON

ROLLREF = VEGA

COMMAND MORATORIUM

↓ 1900 AAI

1903 |----- MAGROL -----| 0059

↓ 0052 RAI

↓ 0059 CRU

↓ 0059 GYROS OFF

FDS MODE  
XB DATA RATE (MI)

CR-5T  
160 (32)

VOYAGER COVERAGE

ON CALL

VGR

ON CALL

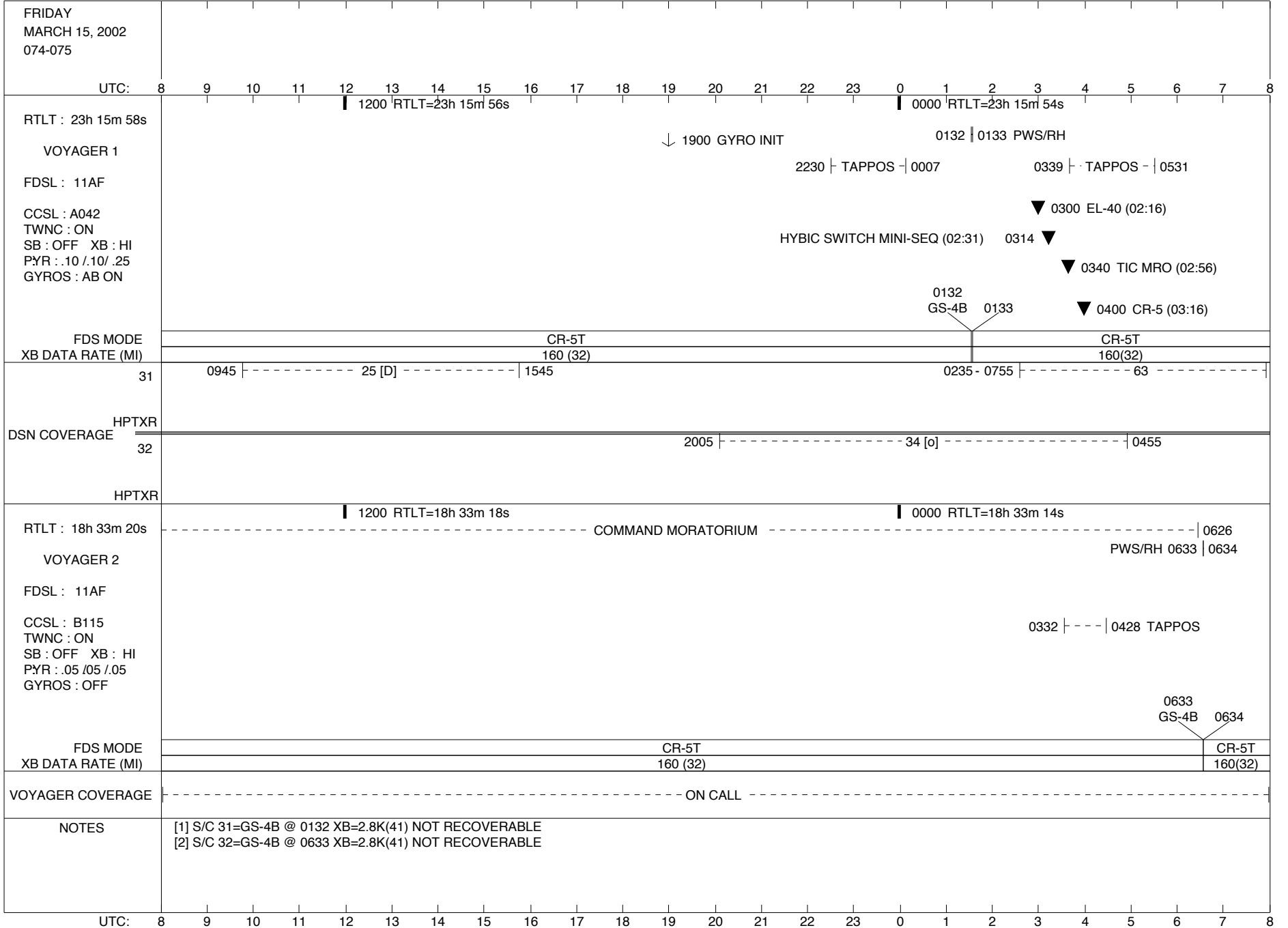
NOTES

[1] S/C 32 - D/L AGC VARIATIONS EXPECTED DURING MAGROL (1903-0059)

UTC: 8 9 10 11 12 13 14 15 16 17 18 19 20 21 22 23 0 1 2 3 4 5 6 7 8

ISSUE DATE: 03/14/02 - 11:13

PST: 0 1 2 3 4 5 6 7 8 9 10 11 12 13 14 15 16 17 18 19 20 21 22 23 0



ISSUE DATE: 03/14/02 - 11:13

PST: 0 1 2 3 4 5 6 7 8 9 10 11 12 13 14 15 16 17 18 19 20 21 22 23 0

SATURDAY  
MARCH 16, 2002  
075-076

UTC: 8 9 10 11 12 13 14 15 16 17 18 19 20 21 22 23 0 1 2 3 4 5 6 7 8

RTLT : 23h 15m 54s

VOYAGER 1

FDSL : 11AF

CCSL : A042  
TWNC : ON  
SB : OFF XB : HI  
PYR : .10 / .10 / .25  
GYROS : AB ON

FDS MODE  
XB DATA RATE (MI)

CR-5T

160(32)

\* 0217 \* 0317

EL-40

40(30)

CR-5T

160(32)

\* 0231 \* 0247 MINI-SEQ D/L

\* 0248 \* 0252 CCS CHKSUM

\* 0259 \* 0314 CCS DRIBBLE MRO

▽ 04:00 - 05:00 MINI-SEQ  
SECOND OPPORTUNITY

31 |-----| 15 [D] |-----| 0830 - 1820 |-----| 0035 - 0745 |-----| 63 |-----|

HPTXR |-----| 1800 |-----| 34 [D] |-----| 2220 |-----| 25 [D] 0725 |-----|

DSN COVERAGE

32 |-----| 1450 |-----| 45 [D] |-----| 0545 |-----|

HPTXR

RTLT : 18h 33m 14s

VOYAGER 2

FDSL : 11AF

CCSL : B115  
TWNC : ON  
SB : OFF XB : HI  
PYR : .05 / .05 / .05  
GYROS : OFF

FDS MODE  
XB DATA RATE (MI)

CR-5T

160(32)

1200 RTLT=18h 33m 12s

0000 RTLT=18h 33m 8s

|---| 0841 - 0923 TAPPOS

VOYAGER COVERAGE

|-----| ON CALL |-----| VGR |-----| ON CALL |-----|

NOTES

UTC: 8 9 10 11 12 13 14 15 16 17 18 19 20 21 22 23 0 1 2 3 4 5 6 7 8

ISSUE DATE: 03/14/02 - 11:13

PST: 0 1 2 3 4 5 6 7 8 9 10 11 12 13 14 15 16 17 18 19 20 21 22 23 0

SUNDAY  
MARCH 17, 2002  
076-077

UTC: 8 9 10 11 12 13 14 15 16 17 18 19 20 21 22 23 0 1 2 3 4 5 6 7 8

RTLTL : 23h 15m 50s

1200 RTLTL=23h 15m 48s

0000 RTLTL=23h 15m 46s

VOYAGER 1

FDSL : 11AF

CCSL : A042  
TWNC : ON  
SB : OFF XB : HI  
PYR : .10 /.10/ .25  
GYROS : AB ON

▽ 2330 LAST CHANCE U/L MINI-SEQ (22:46)

FDS MODE  
XB DATA RATE (MI)

CR-5T

160(32)

31

1330 |-----14-----| 1840

0225 - 0745 |-----63-----|

HPTXR

-----25 [D]-----| 1335

DSN COVERAGE

32

1340 |-----43 [D]-----| 1840

2145 |-----43 [o]-----| 0200

HPTXR

RTLTL : 18h 33m 8s

1200 RTLTL=18h 33m 6s

0000 RTLTL=18h 33m 4s

VOYAGER 2

FDSL : 11AF

CCSL : B115  
TWNC : ON  
SB : OFF XB : HI  
PYR : .05 /05 /05  
GYROS : OFF

FDS MODE  
XB DATA RATE (MI)

CR-5T

160(32)

VOYAGER COVERAGE

-----ON CALL-----

NOTES

UTC: 8 9 10 11 12 13 14 15 16 17 18 19 20 21 22 23 0 1 2 3 4 5 6 7 8

ISSUE DATE: 03/14/02 - 11:13

PST: 0 1 2 3 4 5 6 7 8 9 10 11 12 13 14 15 16 17 18 19 20 21 22 23 0

MONDAY  
MARCH 18, 2002  
077-078

UTC: 8 9 10 11 12 13 14 15 16 17 18 19 20 21 22 23 0 1 2 3 4 5 6 7 8

RTLTL : 23h 15m 46s

1200 RTLTL=23h 15m 44s

0000 RTLTL=23h 15m 42s

VOYAGER 1

U/L 0550 |  
↓ 0040 AAI TLC (SHORT-FORM) |

FDSL : 11AF

0043 |----- MAGROL -----| 0639

CCSL : A042  
TWNC : ON  
SB : OFF XB : HI  
PYR : .10 / .10 / .25  
GYROS : AB ON

▽ 0205 GYRO DRIFT UPDATE (01:21)

RAI 0632 ↓  
CRU 0639 ↓

▼ 0200 DUMMY (01:16)

FDS MODE  
XB DATA RATE (MI)

CR-5T

160(32)

31

----- 25 [D] ----- | 0840 - 1800  
2345 - 0750 |----- 63 [T] ----- |

DSN COVERAGE  
HPTXR

32

2145 |----- 34 [o] ----- | 0425

HPTXR

1750 |----- 45 [D] ----- | 2150

RTLTL : 18h 33m 4s

1200 RTLTL=18h 33m 0s

0000 RTLTL=18h 32m 58s

VOYAGER 2

FDSL : 11AF

CCSL : B115  
TWNC : ON  
SB : OFF XB : HI  
PYR : .05 / .05 / .05  
GYROS : OFF

FDS MODE  
XB DATA RATE (MI)

CR-5T

160(32)

VOYAGER COVERAGE

----- ON CALL ----- |----- VGR ----- |

NOTES

[1] S/C 31 - D/L AGC VARIATIONS EXPECTED DURING MAGROL (0043-0639)

UTC: 8 9 10 11 12 13 14 15 16 17 18 19 20 21 22 23 0 1 2 3 4 5 6 7 8

ISSUE DATE: 03/14/02 - 11:13

PST: 0 1 2 3 4 5 6 7 8 9 10 11 12 13 14 15 16 17 18 19 20 21 22 23 0

TUESDAY MARCH 19, 2002 078-079	
UTC: 8 9 10 11 12 13 14 15 16 17 18 19 20 21 22 23 0 1 2 3 4 5 6 7 8	
RTLT : 23h 15m 42s  VOYAGER 1  FDSL : 11AF  CCSL : A042 TWNC : ON SB : OFF XB : HI PYR : .10 / .10 / .25 GYROS : AB ON  FDS MODE XB DATA RATE (MI)	1200 RTLT=23h 15m 40s  TLC (SHORT-FORM) -----   D/L -  0634  1908   1909 PWS/RH  0048   0050 TAPPOS 0253   0256 AAC S MRO RAI 0751   1920  ----- DTR MAINT -----  0044 0322   AAI CRU 0758   0322   HYBIC 2 -> HYBIC 1 0341   0343 AAC S MRO 0256 0422  CR-5T CR-5T EH-12 EL-40 160(32) 160(32) 1.2K(39) 40(30)
31  DSN COVERAGE HPTXR 32  HPTXR	0000 RTLT=23h 15m 38s 0238 SLEW->HELIO-2C  0250  ----- HYBIC SWITCH TEST ----- HYBIC 1 -> HYBIC 2 0732   0310 ALL DB = 0.1 0322   AAI 0322   HYBIC 2 -> HYBIC 1 0341   0343 AAC S MRO 0256 0422  15 [D] -----   0820 - 1220  0010  ----- 63 [D] ----- 0200  ----- 65 [D,3] ----- 1345  ----- 43 [B] -----  2320
RTLT : 18h 32m 58s  VOYAGER 2  FDSL : 11AF  CCSL : B115 TWNC : ON SB : OFF XB : HI PYR : .05 / .05 / .05 GYROS : OFF  FDS MODE XB DATA RATE (MI)	1200 RTLT=18h 32m 54s  1809   1810 PWS/RH  0000 RTLT=18h 32m 52s COMMAND MORATORIUM 0754    2147 DUMMY CC (5 MIN BRACKETED 16:20)  1809 GS-4B 1810  CR-5T CR-5T 160(32) 160(32)
VOYAGER COVERAGE  NOTES	----- ON CALL -----  ----- VGR ----- ----- ON CALL ----- ----- VGR -----   [1] S/C 32=GS-4B @ 1809 XB=2.8K(41) NOT RECOVERABLE [2] S/C 31=GS-4B @ 1908 XB=2.8K(41) NOT RECOVERABLE [3] DSS-65 BACK-UP TO BROADCAST VGRTISB4
UTC: 8 9 10 11 12 13 14 15 16 17 18 19 20 21 22 23 0 1 2 3 4 5 6 7 8	

ISSUE DATE: 03/14/02 - 11:13

PST: 0 1 2 3 4 5 6 7 8 9 10 11 12 13 14 15 16 17 18 19 20 21 22 23 0

WEDNESDAY  
MARCH 20, 2002  
079-080

2145 | HYBIC 1 DATA DECISION REVIEW MEETING

UTC: 8 9 10 11 12 13 14 15 16 17 18 19 20 21 22 23 0 1 2 3 4 5 6 7 8

RTLT : 23h 15m 38s

1200 RTLT=23h 15m 36s

0000 RTLT=23h 15m 34s

↓ 0238 SLEW->HELIO-3C

VOYAGER 1

FDSL : 11AF

-----| 0930 HYBIC SWITCH TEST

|-----| 0826- 0847 AACs MRO

↓ 2200 GO/NO GO DISABLE HYBIC SWITCH

CCSL : A042

█ 0900 ROLL DB = .25

HYBIC SWITCH DISABLE (02:16) 0300 ▽

TWNC : ON

SB : OFF XB : HI

PYR : .10 /.10/.10

GYROS : AB ON

0904 |-----| 0932 CCS DRIBBLE MRO

0813

EH-12 0847

FDS MODE

CR-5T

XB DATA RATE (MI)

160(32)

31

-----| 15 [D] -----| 0820 - 1515

---| 0845 63 [D]

1455 |-----| 25 [D] -----| 1750

0200 |-----| 63 [D] -----| 0645

DSN COVERAGE

HPTXR

32

1630 |-----| 43 [D] -----| 0210

HPTXR

RTLT : 18h 32m 52s

1200 RTLT=18h 32m 48s

0000 RTLT=18h 32m 46s

----- COMMAND MORATORIUM -----

↓ 0156 X/B LOW POWER

↓ 0200 BAY 1 HTR ON

VOYAGER 2

FDSL : 11AF

CCSL : B115

TWNC : ON

SB : OFF XB : HI

PYR : .05 /05 /05

GYROS : OFF

FDS MODE

CR-5T

XB DATA RATE (MI)

160(32)

VOYAGER COVERAGE

--- VGR --- |-----| ON CALL ----- |-----| VGR --- |-----| ON CALL -----

NOTES

UTC: 8 9 10 11 12 13 14 15 16 17 18 19 20 21 22 23 0 1 2 3 4 5 6 7 8

ISSUE DATE: 03/14/02 - 11:13

PST: 0 1 2 3 4 5 6 7 8 9 10 11 12 13 14 15 16 17 18 19 20 21 22 23 0

THURSDAY  
MARCH 21, 2002  
080-081

1800 | DECISION TO PROCEED/NOT PROCEED WITH TWEAK

UTC: 8 9 10 11 12 13 14 15 16 17 18 19 20 21 22 23 0 1 2 3 4 5 6 7 8

RTLT : 23h 15m 34s

1200 RTLT=23h 15m 32s

0000 RTLT=23h 15m 30s

↓ 0238 SLEW->HELIO-4C

VOYAGER 1

FDSL : 11AF

CCSL : A042  
TWNC : ON  
SB : OFF XB : HI  
PYR : .10 /.10/.25  
GYROS : AB ON

FDS MODE  
XB DATA RATE (MI)

CR-5T  
160(32)

31 0920 |-----25 [D]-----| 1745 0205 - 0715 |-----63 [D]-----|

DSN COVERAGE HPTXR

32 1505 |-----43 [D]-----| 2045

HPTXR

RTLT : 18h 32m 46s

1200 RTLT=18h 32m 42s

0000 RTLT=18h 32m 40s

-----COMMAND MORATORIUM-----

VOYAGER 2

FDSL : 11AF

CCSL : B115  
TWNC : ON  
SB : OFF XB : LOW  
PYR : .05 /05 /.05  
GYROS : OFF

FDS MODE  
XB DATA RATE (MI)

CR-5T  
160(32)

VOYAGER COVERAGE

-----ON CALL-----

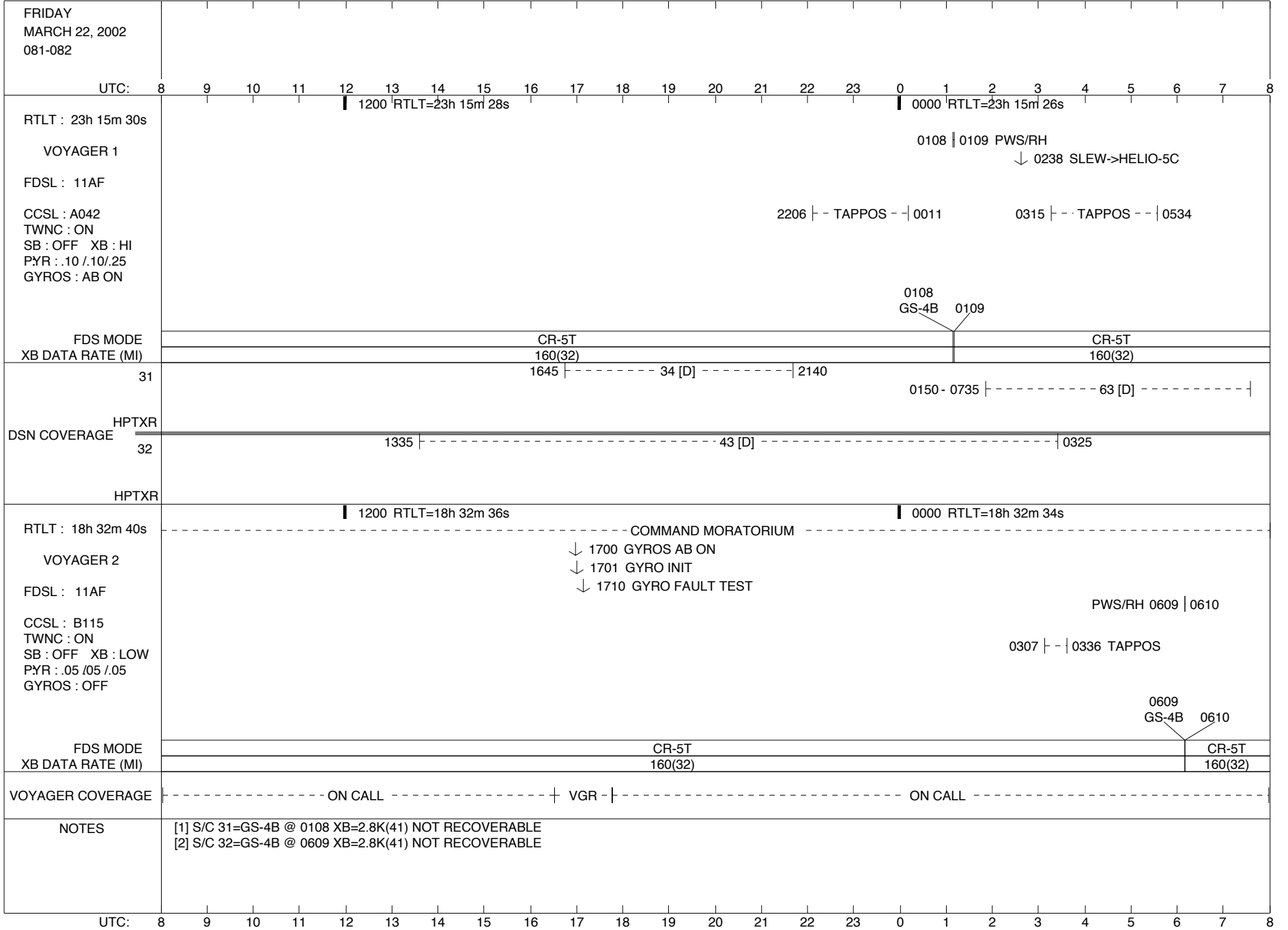
NOTES

UTC: 8 9 10 11 12 13 14 15 16 17 18 19 20 21 22 23 0 1 2 3 4 5 6 7 8



ISSUE DATE: 03/14/02 - 11:13

PST: 0 1 2 3 4 5 6 7 8 9 10 11 12 13 14 15 16 17 18 19 20 21 22 23 0



ISSUE DATE: 03/14/02 - 11:13

PST: 0 1 2 3 4 5 6 7 8 9 10 11 12 13 14 15 16 17 18 19 20 21 22 23 0

SATURDAY  
MARCH 23, 2002  
082-083

UTC: 8 9 10 11 12 13 14 15 16 17 18 19 20 21 22 23 0 1 2 3 4 5 6 7 8

RTLT : 23h 15m 26s

1200 RTLT=23h 15m 24s

0000 RTLT=23h 15m 22s

↓ 0238 SLEW->HELIO-6C

VOYAGER 1

FDSL : 11AF

CCSL : A042  
TWNC : ON  
SB : OFF XB : HI  
PYR : .10 /.10/.25  
GYROS : AB ON

FDS MODE  
XB DATA RATE (MI)

CR-5T

160(32)

31 |----- 25 [D] -----| 0820 - 1730

DSN COVERAGE  
HPTXR

32 |----- 1345 |----- 43 [o] -----| 2315

HPTXR

RTLT : 18h 32m 34s

1200 RTLT=18h 32m 30s

0000 RTLT=18h 32m 28s

----- COMMAND MORATORIUM ----- | 2228

VOYAGER 2

FDSL : 11AF

CCSL : B115  
TWNC : ON  
SB : OFF XB : LOW  
PYR : .05 /05 /05  
GYROS : AB ON

| 0817 - 0832 TAPPOS

FDS MODE  
XB DATA RATE (MI)

CR-5T

160(32)

VOYAGER COVERAGE

----- ON CALL -----

NOTES

UTC: 8 9 10 11 12 13 14 15 16 17 18 19 20 21 22 23 0 1 2 3 4 5 6 7 8

ISSUE DATE: 03/14/02 - 11:13

PST: 0 1 2 3 4 5 6 7 8 9 10 11 12 13 14 15 16 17 18 19 20 21 22 23 0

SUNDAY  
MARCH 24, 2002  
083-084

UTC: 8 9 10 11 12 13 14 15 16 17 18 19 20 21 22 23 0 1 2 3 4 5 6 7 8

RTLT : 23h 15m 22s

1200 RTLT=23h 15m 22s

0000 RTLT=23h 15m 20s

↓ 0238 SLEW->HELIO-7C

VOYAGER 1

FDSL : 11AF

CCSL : A042  
TWNC : ON  
SB : OFF XB : HI  
PYR : .10 /.10/.25  
GYROS : AB ON

FDS MODE  
XB DATA RATE (MI)

CR-5T

160(32)

31

-----25 [D]-----|0820 - 1515

1455 |-----43 [D]-----|2315

HPTXR

DSN COVERAGE

32

1410 |-----34 [D]-----|2045

HPTXR

RTLT : 18h 32m 28s

1200 RTLT=18h 32m 24s

0000 RTLT=18h 32m 20s

VOYAGER 2

FDSL : 11AF

CCSL : B115  
TWNC : ON  
SB : OFF XB : LOW  
PYR : .05 /05 /05  
GYROS : AB ON

FDS MODE  
XB DATA RATE (MI)

CR-5T

160(32)

VOYAGER COVERAGE

-----ON CALL-----

NOTES

UTC: 8 9 10 11 12 13 14 15 16 17 18 19 20 21 22 23 0 1 2 3 4 5 6 7 8

ISSUE DATE: 03/14/02 - 11:13

PST: 0 1 2 3 4 5 6 7 8 9 10 11 12 13 14 15 16 17 18 19 20 21 22 23 0

MONDAY  
MARCH 25, 2002  
084-085

UTC: 8 9 10 11 12 13 14 15 16 17 18 19 20 21 22 23 0 1 2 3 4 5 6 7 8

RTLTL : 23h 15m 20s

1200 RTLTL=23h 15m 18s

0000 RTLTL=23h 15m 16s

↓ 0238 SLEW->HELIO-8C

VOYAGER 1

FDSL : 11AF

CCSL : A042  
TWNC : ON  
SB : OFF XB : HI  
PYR : .10 /.10/.25  
GYROS : AB ON

FDS MODE  
XB DATA RATE (MI)

CR-5T

160(32)

31 |-----25 [D]-----| 0810 - 1655 |-----15 [D] 0750 |

1635 |-----34 [D]-----| 2130 0030 - 0730 |-----65 [D]-----|

DSN COVERAGE  
HPTXR

32

1515 |-----45 [D]-----| 0020

HPTXR

RTLTL : 18h 32m 20s

1200 RTLTL=18h 32m 18s

0000 RTLTL=18h 32m 14s

VOYAGER 2

FDSL : 11AF

CCSL : B115  
TWNC : ON  
SB : OFF XB : LOW  
PYR : .05 /05 /05  
GYROS : AB ON

FDS MODE  
XB DATA RATE (MI)

CR-5T

160(32)

VOYAGER COVERAGE

-----ON CALL-----

NOTES

UTC: 8 9 10 11 12 13 14 15 16 17 18 19 20 21 22 23 0 1 2 3 4 5 6 7 8

ISSUE DATE: 03/14/02 - 11:13

PST: 0 1 2 3 4 5 6 7 8 9 10 11 12 13 14 15 16 17 18 19 20 21 22 23 0

TUESDAY  
MARCH 26, 2002  
085-086

UTC: 8 9 10 11 12 13 14 15 16 17 18 19 20 21 22 23 0 1 2 3 4 5 6 7 8

RTLTL : 23h 15m 16s

1200 RTLTL=23h 15m 14s

0000 RTLTL=23h 15m 12s

VOYAGER 1

U/L 1630 | - | - - - - - TLC (SHORT-FORM) - - - - -

FDSL : 11AF

1844 | 1845 PWS/RH

↓ 0238 SLEW->HELIO-9C

CCSL : A042  
TWNC : ON  
SB : OFF XB : HI  
PYR : .10 /.10/.25  
GYROS : AB ON

▼ 1600 DUMMY (15:15)

1844  
GS-4B 1845

FDS MODE  
XB DATA RATE (MI)

CR-5T  
160(32)

CR-5T  
160(32)

31

15 [D] - - - - - | 1155

1135 | - - - - - 14 [T] - - - - - | 1815

15 [D] 0745 | -

0030 | - - - - - 63 [D] - - - - - | 0645

DSN COVERAGE  
HPTXR

32

1420 | - - - - - 34 [o] - - - - - | 2145

HPTXR

RTLTL : 18h 32m 14s

1200 RTLTL=18h 32m 14s

0000 RTLTL=18h 32m 8s

VOYAGER 2

1745 | 1746 PWS/RH

↓ 1800 GYRO INIT

FDSL : 11AF

CCSL : B115  
TWNC : ON  
SB : OFF XB : LOW  
PYR : .05 /05 /05  
GYROS : AB ON

1745  
GS-4B 1746

FDS MODE  
XB DATA RATE (MI)

CR-5T  
160(32)

CR-5T  
160(32)

VOYAGER COVERAGE

- - - - - ON CALL - - - - - | - VGR - | - - - - - ON CALL - - - - - |

NOTES

- [1] S/C 32=GS-4B @ 1745 XB=2.8K(41) NOT RECOVERABLE
- [2] S/C 31=GS-4B @ 1844 XB=2.8K(41) NOT RECOVERABLE

UTC: 8 9 10 11 12 13 14 15 16 17 18 19 20 21 22 23 0 1 2 3 4 5 6 7 8

ISSUE DATE: 03/14/02 - 11:13

PST: 0 1 2 3 4 5 6 7 8 9 10 11 12 13 14 15 16 17 18 19 20 21 22 23 0

WEDNESDAY  
MARCH 27, 2002  
086-087

UTC: 8 9 10 11 12 13 14 15 16 17 18 19 20 21 22 23 0 1 2 3 4 5 6 7 8

RTLTL : 23h 15m 12s

1200 RTLTL=23h 15m 12s

0000 RTLTL=23h 15m 10s

VOYAGER 1

----- TLC (SHORT-FORM) ----- + D/L -| 1713

FDSL : 11AF

1035 | PLSCAL -| 1217

CCSL : A042

1035 | --- MAGCAL --- | 1337

↓ 0238 SLEW->HELIO-10C

TWNC : ON

SB : OFF XB : HI

PYR : .10 /.10/.25

GYROS : AB ON

1035 | ---- PESCAL ---- | 1355

FDS MODE  
XB DATA RATE (MI)

CR-5T

160(32)

31

----- 15 [D] ----- | 1725

0035 - 0725 | ----- 63 [D] ----- |

DSN COVERAGE  
HPTXR

32

1315 | ----- 43 [B] ----- | 0125

HPTXR

RTLTL : 18h 32m 8s

1200 RTLTL=18h 32m 6s

0000 RTLTL=18h 32m 2s

VOYAGER 2

FDSL : 11AF

▼ 2147 DUMMY (5 MIN BRACKETED 16:20)

CCSL : B115

TWNC : ON

SB : OFF XB : LOW

PYR : .05 /05 /05

GYROS : AB ON

FDS MODE  
XB DATA RATE (MI)

CR-5T

160(32)

VOYAGER COVERAGE

----- ON CALL ----- + VGR - - - - - ON CALL ----- |

NOTES

UTC: 8 9 10 11 12 13 14 15 16 17 18 19 20 21 22 23 0 1 2 3 4 5 6 7 8

ISSUE DATE: 03/14/02 - 11:13

PST: 0 1 2 3 4 5 6 7 8 9 10 11 12 13 14 15 16 17 18 19 20 21 22 23 0

THURSDAY  
MARCH 28, 2002  
087-088

UTC: 8 9 10 11 12 13 14 15 16 17 18 19 20 21 22 23 0 1 2 3 4 5 6 7 8

RTLT : 23h 15m 10s

1200 RTLT=23h 15m 8s

0000 RTLT=23h 15m 6s

↓ 0238 SLEW->MIDPNT-C

VOYAGER 1

FDSL : 11AF

CCSL : A042  
TWNC : ON  
SB : OFF XB : HI  
PYR : .10 /.10/.25  
GYROS : AB ON

FDS MODE  
XB DATA RATE (MI)

CR-5T

160(32)

31

1410

43 [D]

2315

15 [D]

0740

0030

65 [D]

0655

DSN COVERAGE  
HPTXR

32

1355

34 [D]

2330

HPTXR

RTLT : 18h 32m 2s

1200 RTLT=18h 31m 58s

0000 RTLT=18h 31m 56s

VOYAGER 2

FDSL : 11AF

CCSL : B115  
TWNC : ON  
SB : OFF XB : LOW  
PYR : .05 /05 /05  
GYROS : AB ON

FDS MODE  
XB DATA RATE (MI)

CR-5T

160(32)

VOYAGER COVERAGE

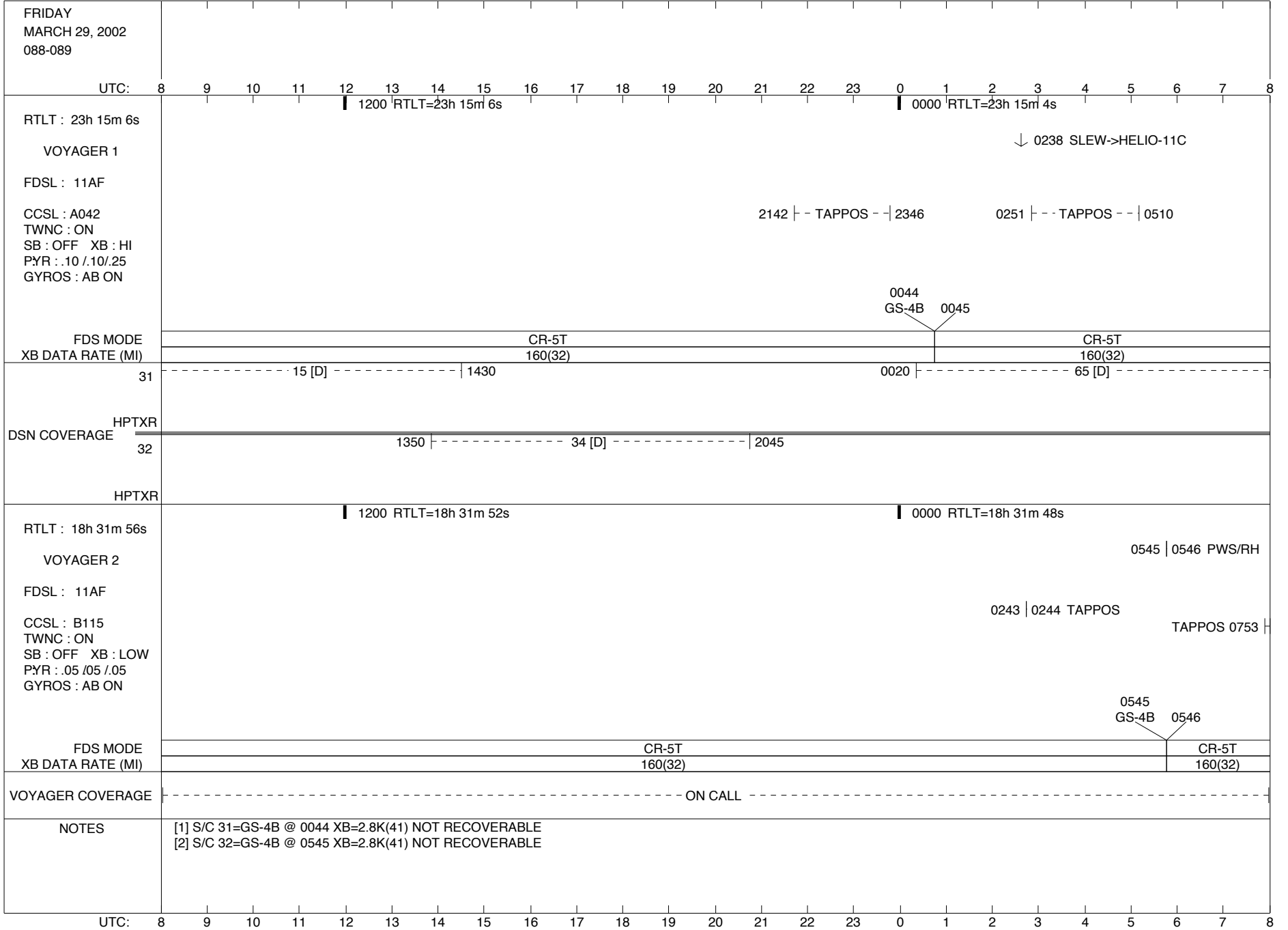
----- ON CALL -----

NOTES

UTC: 8 9 10 11 12 13 14 15 16 17 18 19 20 21 22 23 0 1 2 3 4 5 6 7 8

ISSUE DATE: 03/14/02 - 11:13

PST: 0 1 2 3 4 5 6 7 8 9 10 11 12 13 14 15 16 17 18 19 20 21 22 23 0





ISSUE DATE: 03/14/02 - 11:13

PST: 0 1 2 3 4 5 6 7 8 9 10 11 12 13 14 15 16 17 18 19 20 21 22 23 0

SATURDAY  
MARCH 30, 2002  
089-090

UTC: 8 9 10 11 12 13 14 15 16 17 18 19 20 21 22 23 0 1 2 3 4 5 6 7 8

RTLTL : 23h 15m 4s

1200 RTLTL=23h 15m 2s

0000 RTLTL=23h 15m 0s

↓ 0238 SLEW->HELIO-12C

VOYAGER 1

FDSL : 11AF

CCSL : A042  
TWNC : ON  
SB : OFF XB : HI  
PYR : .10 /.10/.25  
GYROS : AB ON

FDS MODE  
XB DATA RATE (MI)

CR-5T

160(32)

31 | 0810 65 [D]

1615 |-----34 [D]-----| 2100  
2250 - 0725 |-----63 [D]-----|

DSN COVERAGE  
HPTXR

32

1310 |-----45 [D]-----| 0450

HPTXR

RTLTL : 18h 31m 48s

1200 RTLTL=18h 31m 46s

0000 RTLTL=18h 31m 42s

VOYAGER 2

↓ 1800 GYRO INIT

FDSL : 11AF

CCSL : B115  
TWNC : ON  
SB : OFF XB : LOW  
PYR : .05 /05 /05  
GYROS : AB ON

| 0806 TAPPOS

FDS MODE  
XB DATA RATE (MI)

CR-5T

160(32)

VOYAGER COVERAGE

----- ON CALL -----

NOTES

UTC: 8 9 10 11 12 13 14 15 16 17 18 19 20 21 22 23 0 1 2 3 4 5 6 7 8

ISSUE DATE: 03/14/02 - 11:13

PST: 0 1 2 3 4 5 6 7 8 9 10 11 12 13 14 15 16 17 18 19 20 21 22 23 0

SUNDAY  
MARCH 31, 2002  
090-091

UTC: 8 9 10 11 12 13 14 15 16 17 18 19 20 21 22 23 0 1 2 3 4 5 6 7 8

RTLT : 23h 15m 0s

1200 RTLT=23h 15m 0s

0000 RTLT=23h 14m 58s

↓ 0238 SLEW->HELIO-13C

VOYAGER 1

FDSL : 11AF

CCSL : A042  
TWNC : ON  
SB : OFF XB : HI  
PYR : .10 /.10/.25  
GYROS : AB ON

FDS MODE  
XB DATA RATE (MI)

CR-5T

160(32)

31

1455 |----- 43 [D] -----| 2305

15 [D] 0725 |-----

DSN COVERAGE  
HPTXR

32

1345 |----- 34 [D] -----| 2145

HPTXR

RTLT : 18h 31m 42s

1200 RTLT=18h 31m 40s

0000 RTLT=18h 31m 36s

VOYAGER 2

FDSL : 11AF

CCSL : B115  
TWNC : ON  
SB : OFF XB : LOW  
PYR : .05 /05 /05  
GYROS : AB ON

FDS MODE  
XB DATA RATE (MI)

CR-5T

160(32)

VOYAGER COVERAGE

----- ON CALL -----

NOTES

UTC: 8 9 10 11 12 13 14 15 16 17 18 19 20 21 22 23 0 1 2 3 4 5 6 7 8